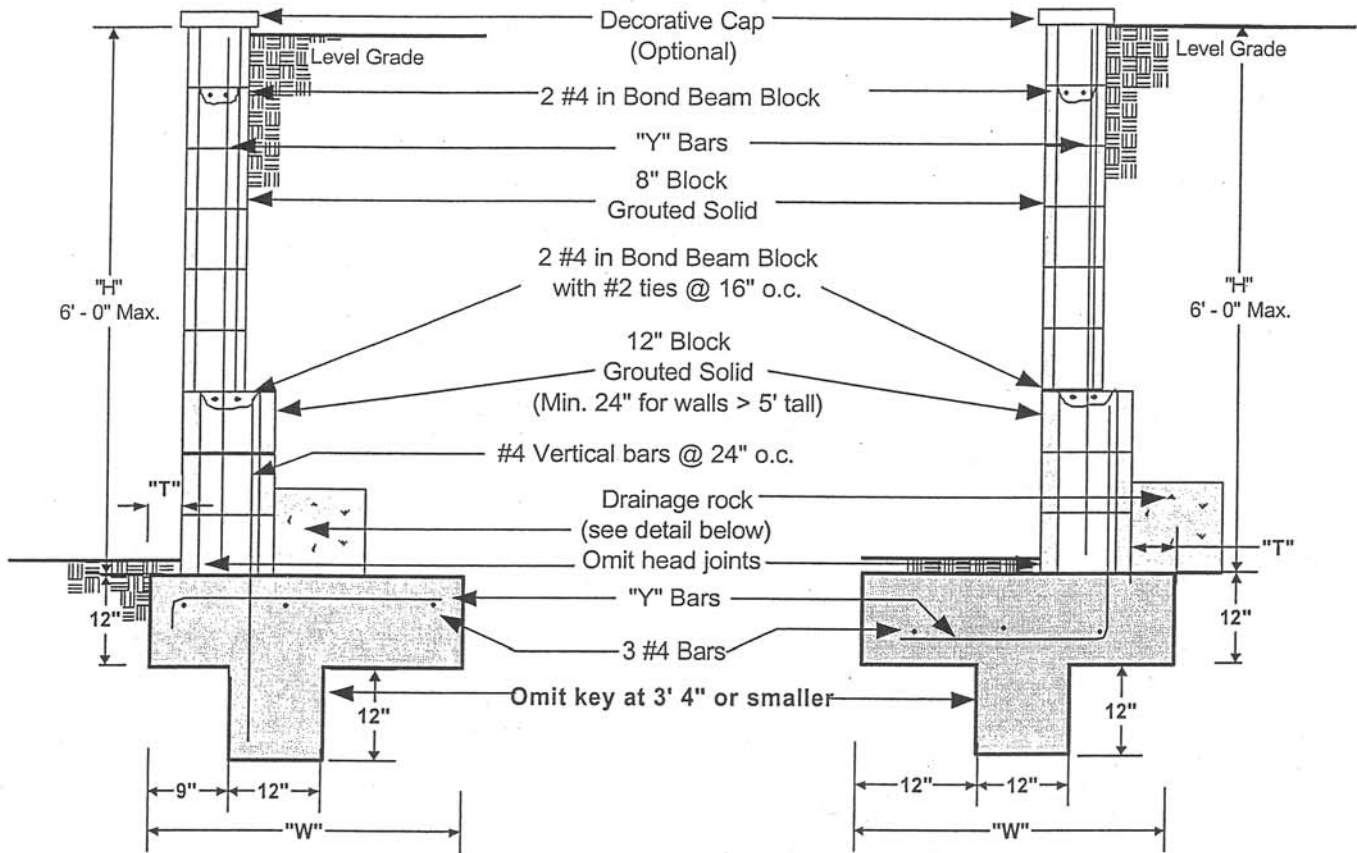


# Culver CITY

BUILDING SAFETY DIVISION

## Retaining Walls

6' maximum height with no surcharge



H	W	Y Bars	"T"
3'	1' - 10"	#3 @ 32" o.c.	3"
4'	2' - 6"	#4 @ 48" o.c.	3"
5'	3' - 0"	#4 @ 24" o.c.	3"
6'	3' - 8"	#4 @ 24" o.c.	3"

← OR →

H	W	Y Bars	"T"
3'	1' - 9"	#3 @ 32" o.c.	3"
4'	2' - 2"	#4 @ 48" o.c.	6"
5'	2' - 8"	#4 @ 24" o.c.	11"
6'	3' - 3"	#4 @ 24" o.c.	16"

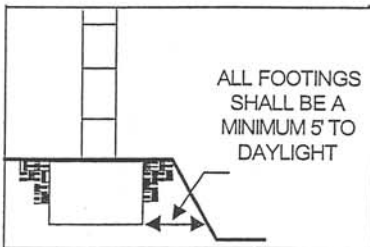
All footings are to be placed against undisturbed soil

**NOTES:**

- 1) All vertical & horizontal steel shall have a minimum 24" lap.
- 2) Walls shall not obstruct or concentrate lot drainage.
- 3) All steel to maintain 3" clear to earth.

**INSPECTIONS:**

- 1) Foundation - prior to pour.
- 2) Bond beam - prior to grouting.
- 3) Final - after wall is capped.



1. Concrete in footing to test 2000 p.s.i. @ 28 days
2. Concrete block - Grade "N" units A.S.T.M. C-90
3. Grout: 1 part cement, 3 parts sand, 2 parts pea gravel.
4. Mortar - 2 part cement, 1 part lime putty, 9 parts sand.
5. Reinforcing steel minimum grade 40.

