

14. Head east on Culver Blvd. across Lafayette; the **Meralta Plaza**, was named for the site of the 1920s Meralta Theater-Will Rogers was the opening act.
15. Right along Meralta Plaza, to see the **Lafayette Residential District**, 1925 Spanish Colonial Courts (L)

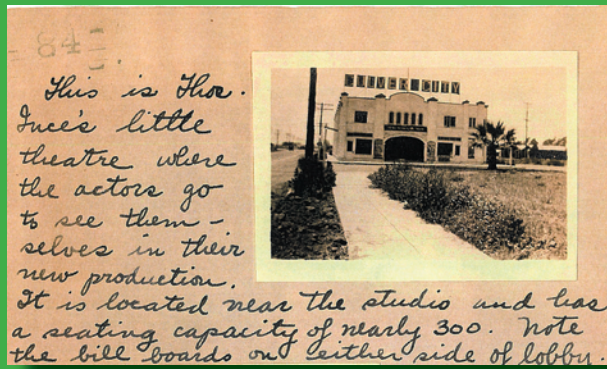
- Continue to the corner, turning left on Braddock Dr. and walking along Braddock to Irving Place.



- Note **Linwood Howe School** (right)
- Cross Irving, turn left and the **CCUSD District Office** (site of early Culver Grammar School) is directly ahead and **Fire Station #1** is across the street; stroll east on "A" Street.



16. Walk behind the theatres, noting the building ahead that housed City Hall, Fire and Police on Van Buren Place from 1922-28
17. Turn left, back up to Harry Culver's 1924 hotel. Culver's offices were located on the 2nd floor. During the filming of *The Wizard of Oz*, the "Little People" stayed in the hotel. Famous owners have included John Wayne and Red Skelton. The six-story "skyscraper" hotel is recognizable as a favored movie location shot, and sits at the foot of what has been called "the shortest Main Street in the world." (L)(NR)



FROM THE ...

# scrapbook

*This Scrapbook page, (c. 1918) found in another state, shows the first theatre in Culver City, The Heart of Screenland. The second floor housed the first city offices. It became the site of Harry Culver's six-story landmark skyscraper hotel, preserved today.*

### Legend

- (HS#) Historic Site marked by the Culver City Historical Society
- (L) City designated Landmark structure
- (S) City designated Significant structure
- (NR) National Register status

**locations in bold** • **directions listed in color**

*As you tour Downtown Culver City, you will see informative plaques installed on all city-designated Landmark and Significant structures, sites marked by the Culver City Historical Society and structures designated with National Register status.*

*In addition, Culver City has an Art in Public Places program and interspersed throughout the Downtown area you will find fountains, sculptures and zoetropes that are also identified.*



a self-guided walking tour of downtown culver city, california



Written and printed as a public service  
by City Historian Julie Lugo Cerra  
2005

# the vision

OF CITY FOUNDER HARRY CULVER ...

Culver City was the vision of Nebraska-born real estate entrepreneur Harry H. Culver. In 1913, after a year of study, he announced his plans for a city at the California Club. That was the year he filed his Main Street with the county. Culver City, centered about Main, was originally 1.2 square miles, which expanded over the years to nearly five square miles. Downtown Culver City offers jewels from the past and present that help tell the story of the city's history. Culver City has numerous historic buildings and districts, protected by the city's municipal code since 1990. The City Council also enacted an Art in Public Places program, which has greatly enhanced the city. As you walk through Downtown, notice the old and the new, and stop to read the plaques for the sites and the artwork. You will also see the city flower, Lantana, adorning the route.

## begin your tour

IN CULVER CITY'S TOWN PLAZA,  
IN FRONT OF THE CULVER HOTEL...

1. Walk right, from the hotel, to view public art atop **Plato Building** (see plaque)
2. Stop in front of **The Culver Studios**, (L) (HS#7) (read plaque)
  - Cross Washington Blvd. at Ince; walk to the end of the block
  - Cross Ince going east, then Culver to
3. **Media Park**, and the 1907 **Ivy Substation**, where city founder Harry Culver first noticed actress (and future wife) Lillian Roberts waiting for the Red Car. (NR)
4. Cross Canfield; walk to view plaque on **The Citizen Building** (L) (NR) (HS#4)
5. Continue to Main Street plaque (NE corner; HS #6)
  - Walk north (right) to Venice (You are now in L.A.! Proof: Look at the blue street signs; Culver City's are green!)
  - Cross Bagley (Main St. extended) and walk back down Main, which begins at the alley (CC boundary)
  - Take the Paseo at La Ballona Restaurant...turn right. Note mural; continue to Cardiff; Laurel and Hardy mural is behind Stellar along the way. Enjoy the Zoetropes (public art).
  - Cross Cardiff, stay on Culver to Watseka
6. Read the plaque on the front of the **Hull Building** (L) (HS#2)



- Cross Watseka
7. View the triangular **Washington Building**, built in the 1920s by Charles Lindblade, one of Harry Culver's real estate associates. (L) (NR)



8. View the 1947 **Culver Theatre**, which has been the **Kirk Douglas Theatre** since 2004. (L)
9. Turn right up Hughes to the Spanish style **Legion Building** which is now owned by Brotman Medical Center (L) (HS#5)
  - Return to Washington Boulevard, walking west to **St. Augustine's Church** – (L)(HS# 3) the first church (c 1887) in what became Culver City; now in its third structure.
  - Cross Washington Boulevard at Jasmine;



10. The "**Colonnade**" was built by Thomas Ince in 1915 for his first studio in Culver City. Note plaques on the front (L).
  - Walk back, (east), turning right at Madison Avenue
  - Note granite structure across

the street, a mid-1980s Redevelopment Agency entertainment office project.

11. Walk past the "East Gate" of Sony Pictures, once Ince/Triangle Studios, Goldwyn, MGM, Lorimar and Columbia.
  - Cross Culver Boulevard, heading back, noting the old post office annex at Lincoln Avenue. (right)
12. **The Gateway Station Post Office**, across Lincoln, was built in 1940. ("Gateway to the Stars?")
13. Cross Duquesne Avenue to note the City Hall marker in the grass. (HS#1). The 1928 **Culver City Hall** originally on this site included the Police Department. Walk through the replica façade, through the courtyard, noting public art, to the city seal in front of the Mike Balkman Council Chambers; pass the public notice board, back by flags to the sidewalk.

