

# MERALTA OFFICE PLAZA

Office Space Available For Lease 1,549 SF Up to 5,742 SF

9696 Culver Boulevard | Culver City | CA

Byco Inc., Commercial Development



## PROPERTY FEATURES

- Beautiful Three Story Mediterranean Garden Style Office Building.
- Ample Surface Parking for Tenants, Visitors, and Guests.
- Amenities include: private patios available in some suites, beautifully landscaped courtyard with palm trees, a water fountain.
- Office suites have French doors and windows, elevator service, fully fire sprinkled, handicap accessible, janitorial service 5 days a week.

## AREA HIGHLIGHTS

- Centrally Located in the Heart of Downtown Culver City.
- One block from Starbuck's Coffee, US Post Office, City Hall, Sony Studios, Culver Studios and many boutiques, restaurants and retail services.
- Convenient access to the 405 Freeway and Interstate 10.
- Minutes from Santa Monica, Century City, and LAX.



For More Information  
Please Contact:

Brendan Cavanaugh | License #01783466  
(949) 645-2251 x 210 | [brendan@bycoinc.com](mailto:brendan@bycoinc.com)  
John Byers | License # 00658171  
(949) 645-2251 x 203 | [johnbyers@bycoinc.com](mailto:johnbyers@bycoinc.com)

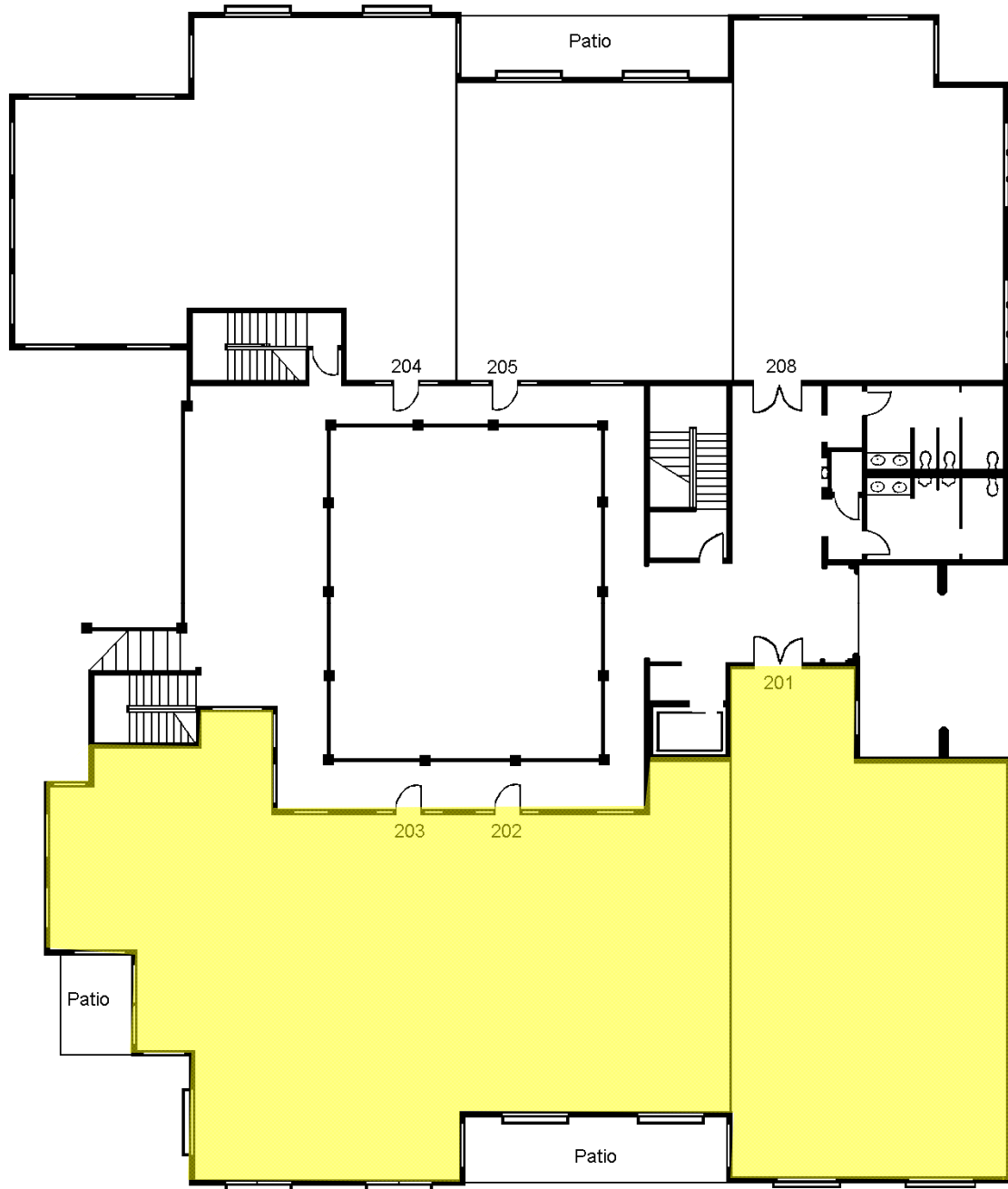
Byco Inc., Commercial Development  
O: (949) 645-2251 F: (949) 645-4137  
2205 Newport Blvd | Suite 200 | Costa Mesa, CA, 92627

# MERALTA OFFICE PLAZA

9696 Culver Boulevard | Culver City | CA

Suite 201-3 Approximately 5,742 SF Available

Byco Inc., Commercial Development



For More Information  
Please Contact:

Brendan Cavanaugh | License #01783466  
(949) 645-2251 x 210 | [brendan@bycoinc.com](mailto:brendan@bycoinc.com)  
John Byers | License # 00658171  
(949) 645-2251 x 203 | [johnbyers@bycoinc.com](mailto:johnbyers@bycoinc.com)

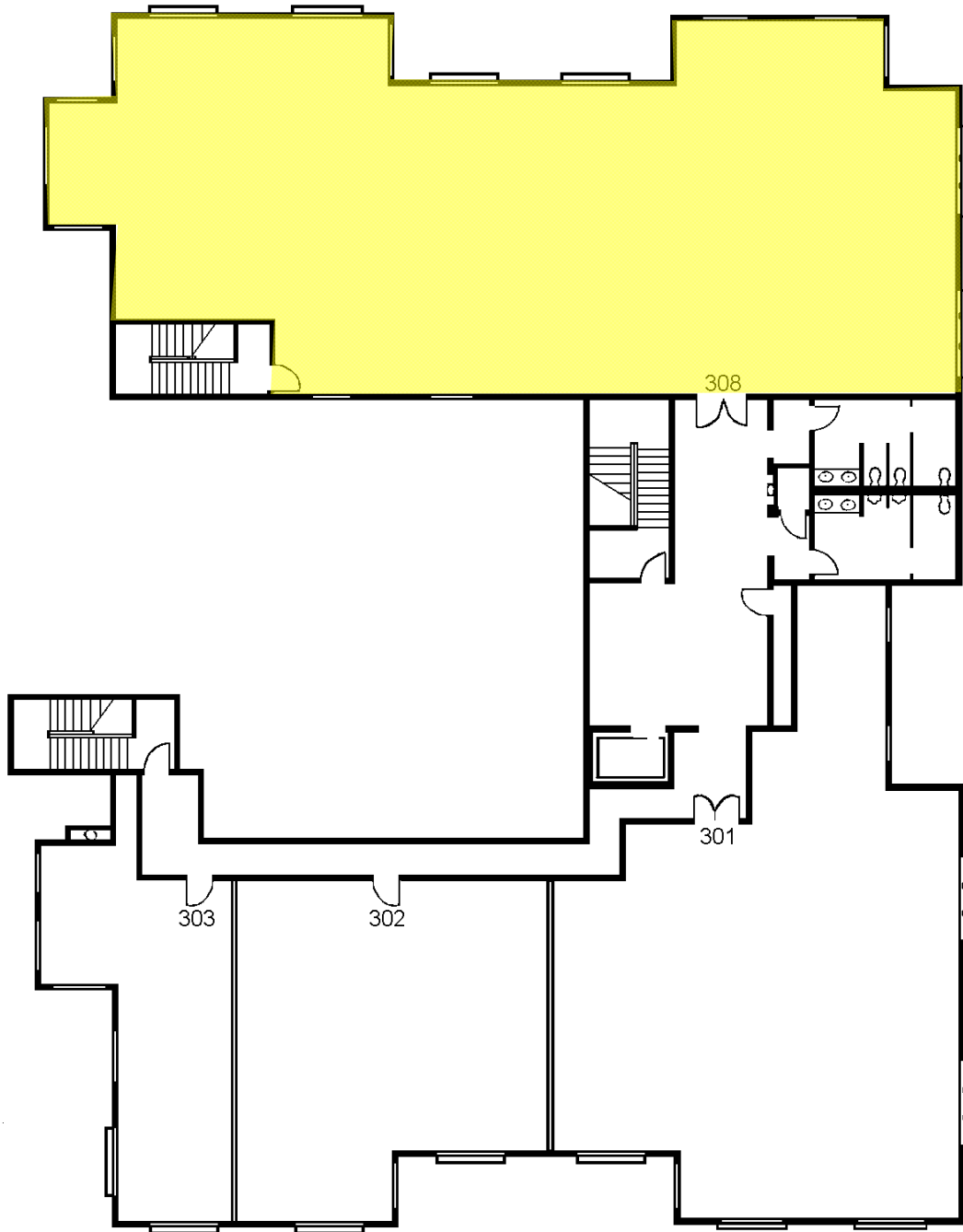
Byco Inc., Commercial Development  
O: (949) 645-2251 F: (949) 645-4137  
2205 Newport Blvd | Suite 200 | Costa Mesa, CA, 92627

# MERALTA OFFICE PLAZA

9696 Culver Boulevard | Culver City | CA

Suite 308 Approximately 4,249 SF Available

Byco Inc., Commercial Development



For More Information  
Please Contact:

Brendan Cavanaugh | License #01783466  
(949) 645-2251 x 210 | [brendan@bycoinc.com](mailto:brendan@bycoinc.com)  
John Byers | License # 00658171  
(949) 645-2251 x 203 | [johnbyers@bycoinc.com](mailto:johnbyers@bycoinc.com)

Byco Inc., Commercial Development  
O: (949) 645-2251 F: (949) 645-4137  
2205 Newport Blvd | Suite 200 | Costa Mesa, CA, 92627