
How Do I Use A Cash Key?

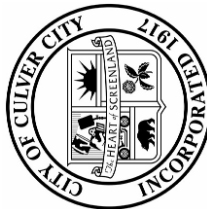
All of the City's parking meters accept *Cash Keys*.

Insert the *Cash Key* into the round hole on the parking meter located next to the coin slot. The dollar value remaining on the *Cash Key* will be displayed and 30 minutes of parking time will be purchased. Partially remove and then reinsert the key to purchase additional 30-minute time increments, up to the maximum allowable parking time permitted. Do not attempt to exceed the parking time limit as the meter will continue to deduct value from the *Cash Key* but will not allow you to purchase additional parking time.

If you leave your *Cash Key* in the hole for more than five seconds, the meter will flash "Out of Order" as a reminder to remove it.

STOP Fumbling for Coins!

A *Cash Key* is an easy and convenient way to operate the City's parking meters, so stop fumbling for coins and put a *Cash Key* on your key ring today.



The City of Culver City
City Treasurers Office — City Hall
9770 Culver Boulevard
Culver City, CA 90232
Tel: 310-253-M₆E₃T₈E₃R
www.culvercity.org

Cash Key Parking Meters

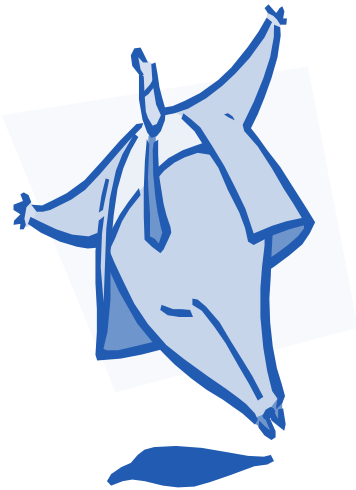
Culver CITY



Tel: 310-253-M₆E₃T₈E₃R
www.culvercity.org

Using a Cash Key Instead of Coins

A *Cash Key* is a plastic key with a computer chip embedded inside it that allows the user to purchase parking time on Culver City parking meters without the use of coins.



Designed to fit on your key ring, the *Cash Key* is a convenient way to purchase metered parking time.



Where Do I Obtain a Cash Key?

A *Cash Key* may be obtained for a refundable deposit of \$15 at:

City Hall — City Treasurers Office
9770 Culver Boulevard, 1st Floor
7:30 AM to 5:30 PM weekdays —
Closed alternating Fridays.

Free visitor parking is available from the Duquesne Avenue underground parking entrance.

How Much Parking Time Can I Buy ?

A *Cash Key* may be programmed in pre-paid dollar amounts ranging from \$20 to \$100.

Cash Keys are reusable, and when their monetary value depletes, they may be replenished with another dollar value from the City Treasurer's Office.

Cash, check or major credit cards are accepted means of payment.

Will Meters Continue To Accept Coins?

Yes. You can use a *Cash Key*, coins, or a combination of both to operate the City's parking meters.

What if the Cash Key Stops Working?

Cash Keys are waterproof, very durable and are not easily damaged or broken. Normal usage should not affect a *Cash Key's* repeated use however, they are not indestructible. If your *Cash Key* becomes inoperable, return it to the City Treasurers Office where you may either elect to have the \$15 deposit refunded or have it replaced with a new one at no cost to you.

If the dollar value can be obtained from the *Cash Key*, you may either receive a refund for the remaining balance, or have it transferred onto a replacement *Cash Key*.

Lost or stolen *Cash Keys* are not refundable.

Culver CITY

The City of Culver City
City Treasurers Office — City Hall
9770 Culver Boulevard
Culver City, CA 90232
Tel: 310-253-M₆E₃T₈E₃R
www.culvercity.org