

HPAC  
RECOMMENDED

RESIDENTIAL

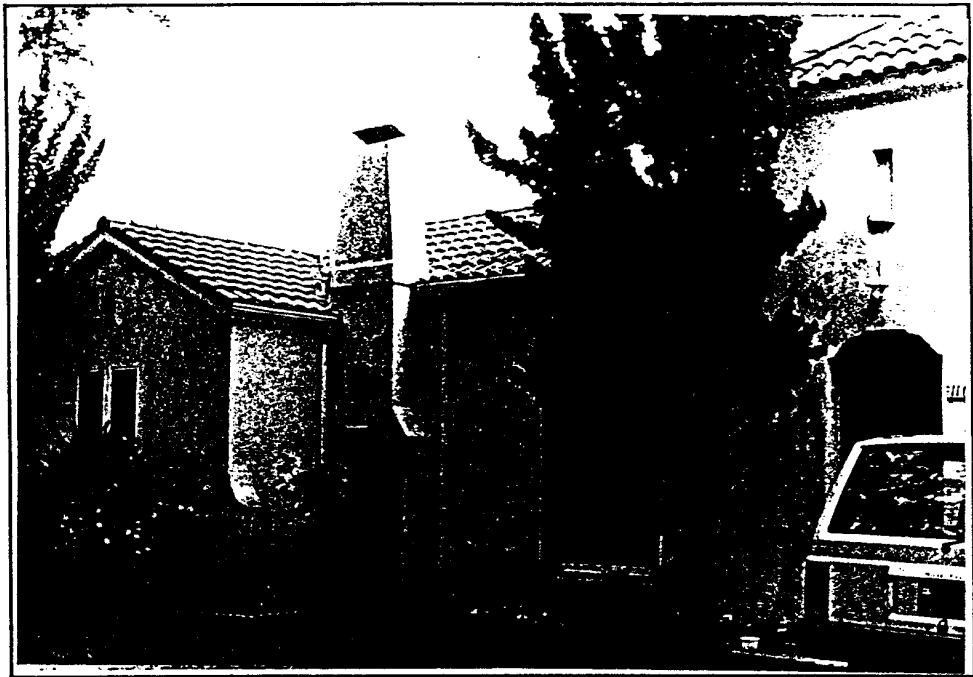
BRADDOCK HISTORIC DISTRICT

ADDRESS:  
11027  
BRADDOCK DRIVE

DATE:  
1927

STYLE:  
SPANISH ECLECTIC

HPAC RANKING:  
RECOGNITION



**DESCRIPTION:**

A neat-appearing Dutch tile roof, bordered by a stucco ledge, caps this ell-shaped house. A square tower, topped by a red tile roof, is located on the southeast corner of the front facade. Stucco covers the exterior of the building. The front-facing gabled wing is accented with a vertical tile vent at the peak and a pair of narrow windows. Wing walls form a graceful curve on each side of the wing. A plate glass window is located in the face of the ell. A large stucco-clad chimney, typical of Period Revival houses, is located at the ell. The entrance is from an open porch, and is in the west wall of the ell.

**SIGNIFICANCE:**

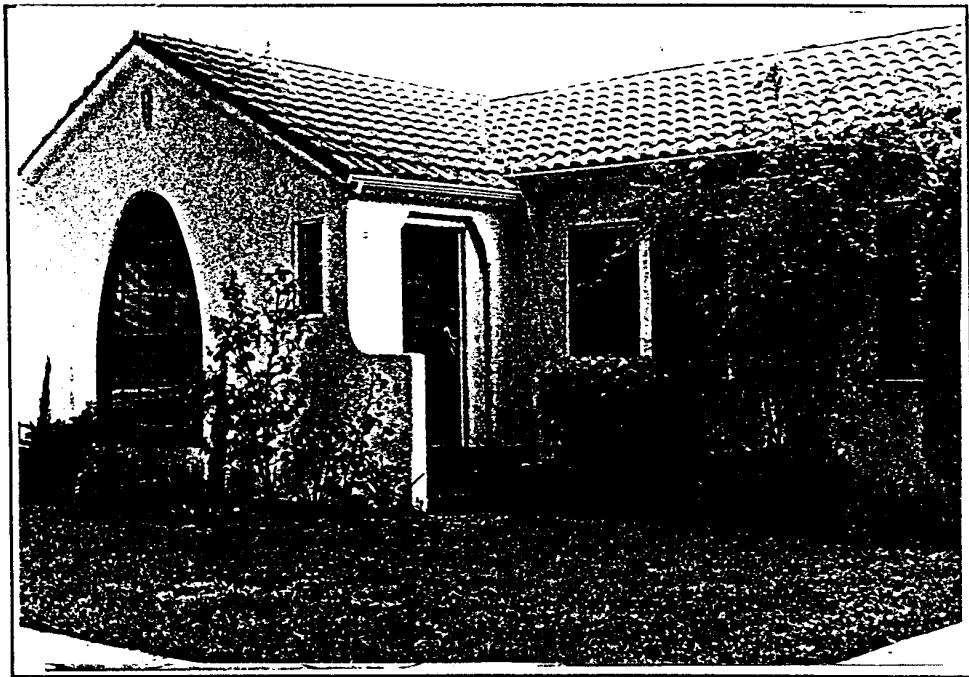
Jack and Eva Martin owned this house in the 1930's. He was a studio worker. The Martins continued to live here for several years. Studio workers were an important component in the economy of Culver City. The house is a contributor to the district because of its architectural integrity and quality.

ADDRESS:  
11033  
BRADDOCK DRIVE

DATE:  
1927

STYLE:  
SPANISH ECLECTIC

HPAC RANKING:  
RECOGNITION



**DESCRIPTION:**

The Dutch tile roof is used on several of the houses on this street. In all cases it is used with narrow eaves with a stucco-clad ledge defining the bottom edge. The house is ell-shaped, with a front-facing gabled wing on the west side. A large multi-paned window is located in the center of the wing. Wingwalls, with a graceful curve, add interest to each side of the front facade. The door, located in an recessed arch in the west wall of the front wing, is wood paneled and fronted with an open porch. A pair of matching double-hung windows are located in the front facade, to the east of the front door.

**SIGNIFICANCE:**

John Liberto, a clerk, and his wife, Lucille, were the owners in 1937. James Luckett was the owner during the 1940's. The wing walls and flattened arch above the front door add character to this house. It contributes to the district because it is a good example of the style built by C.F. Chapman and C.D. Colby.

ADDRESS:  
11034  
BRADDOCK DRIVE

DATE:  
1927

STYLE:  
SPANISH ECLECTIC

HPAC RANKING:  
RECOGNITION



**DESCRIPTION:**

The two gabled wings of the "U"-shaped house at 11034 is also capped by a Dutch tile roof. However, the rear portion of the roof is flat, with a stepped parapet, outlined with a fringe of red clay tiles. Vertical tile vents are centered in the facades of the front wings. The larger front-facing wing is centered with a large arched multi-paned window, while the smaller wing features a pair of windows (now jalousied). The entrance is in the east side of the open center porch.

Green tile was also used in the building's design.

**SIGNIFICANCE:**

Elvin S. McAlexander, a salesman, and his wife, Rox E., lived here in 1937. By the 1960's Charles Listman occupied the residence. The house contributes to the historic district because of its architectural integrity and attention to detail.

Mrs. Bessie Birch lived here from 1945 until 1977. Her daughter Betty R. King owned the house from 1977 to 1990.

ADDRESS:  
11037  
BRADDOCK DRIVE

DATE:  
1927

STYLE:  
SPANISH ECLECTIC

HPAC RANKING:  
RECOGNITION



#### DESCRIPTION:

A medium-pitched Dutch tile roof, in a U-shape, caps this single-storied, stucco-clad house. A central open patio is formed by the "U", with a larger front-facing gabled wing on the west side and a smaller wing on the east side. The same stucco-clad ledges and vertical tile vents are used on this house, as on the others in the district. A series of three arched windows, with a larger window in the center, are used on the front facade of each wing. The front door is in the west side and sheltered by a shed-style portico which is a continuation of the main roof. The original driveway, with a grass strip down the middle, is typical of the 1920's, a period of phenomenal growth for the mass production of automobiles.

#### SIGNIFICANCE:

Charles and Grace Alexander lived here in 1937. He was a carpenter. The N. Constables lived here during the 1960's. This U-shaped Spanish Eclectic bungalow is one of the best examples of high quality 1920's construction in the historic district and is significant for its architectural integrity.

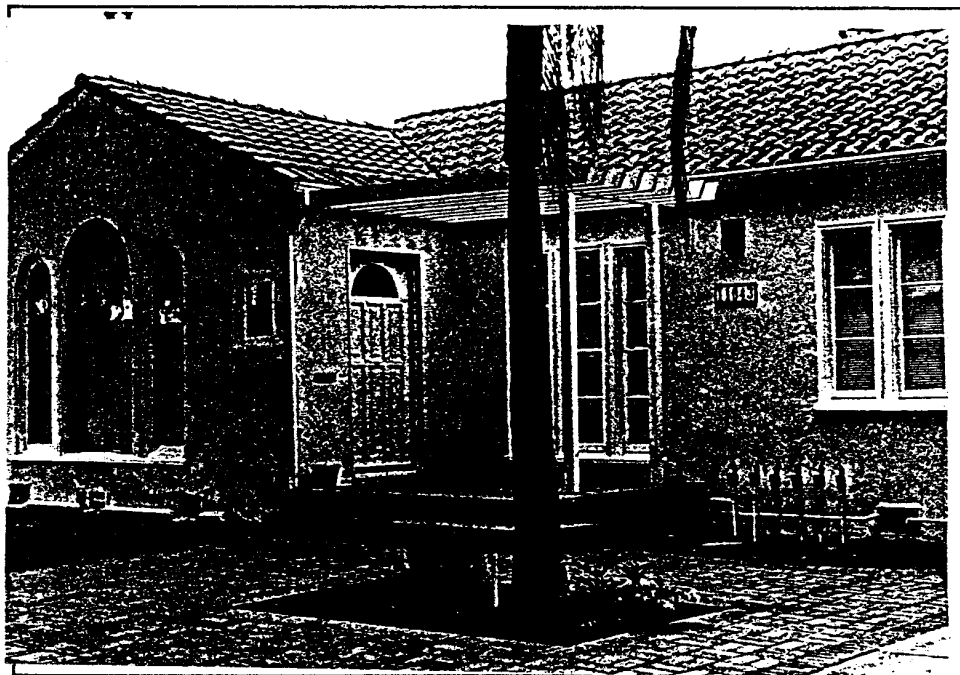
Mr. Constable was the transportation dispatcher for MGM.

ADDRESS:  
11043  
BRADDOCK DRIVE

DATE:  
1927

STYLE:  
SPANISH ECLECTIC

HPAC RANKING:  
RECOGNITION



#### DESCRIPTION:

Ell-shaped, with a Dutch tile roof, edged in a stucco-clad ledge, the house at 11043 features three sets of three windows across the front. The set of windows in the front-facing wing features a large arched plate glass window in the center and narrow arched windows on each side. Those in the section of the front facade are recessed in individual spaces, with tall narrow 3-light casement panels and projecting wood sills. A wooden pergola has been built over the previously open concrete porch. The door, which is set in the west wall of the front wing, is accented with wood panels and a Palladian window.

#### SIGNIFICANCE:

J. D. Conley resided here in the 1930's. The triple window in the center of the front wing and the sets of rectangular windows form an interesting pattern across the front of the house. The building contributes to the district on the basis of its architectural integrity.

**ADDRESS:**

11047

BRADDOCK DRIVE

**DATE:**

1927

**STYLE:**

SPANISH COLONIAL

**HPAC RANKING:**

RECOGNITION



**DESCRIPTION:**

The house at 11047 is another one of the "U"-shaped models in the district. It features the Dutch tile roof and the stucco-clad ledge along the roof line. A large recessed plate glass window is centered in the front-facing gabled wing on the west, and a pair of tall, narrow recessed windows in the smaller wing on the east. The open porch in the center has a concrete floor and solid stucco clad railings on each side of the entrance. The door is in the west wall of the front-facing wing.

**SIGNIFICANCE:**

George and Janet Claussen lived here in the 1930's. He was a salesman. During the 1950's, Doug Masters was the owner. This house contributes to the Braddock Historic District because it retains its original architectural integrity and is a good example of the understated Spanish style houses in the neighborhood.