



Residential Parkway

Landscaping Guidelines

Objectives of the 2016 Parkway Guidelines

1. Replace water-thirsty grass with water efficient plantings
2. Include a climate appropriate plant palette
3. Walkable car-to-sidewalk access
4. Maintain City tree health.
5. Create “How to” guide with sample parkway designs
6. Allow:
 - Edible Plants and Fruit Trees adjacent to multi-family dwellings up to 15’ high (an addition to City tree)
 - Benches, rocks, statues, and other items that are less than 24” tall (within 5’ of driveways) and less than 30” tall everywhere else (to preserve driver sight lines)



Plant Palette

A UPRIGHT SHRUBS



Myrtus communis 'Compacta'
dwarf myrtle



Lavandula stoechas
Spanish lavender

B SPREADING SHRUBS



Lantana montevidensis
purple trailing lantana



Lantana camara 'Gold Rush'
Gold Rush lantana
Culver City's official flower



Rosmarinus 'Prostratus'
prostrate rosemary



Trachelospermum jasminoides
star jasmine

B PERENNIALS



Achillea millefolium
yarrow



Fragaria vesca
wood strawberry



Heuchera maxima
island alumroot



Iris douglasiana
Douglas iris

ANNUALS



Eschscholzia californica
California poppy

Edibles

A ANNUALS



beets



bush beans



edamame



kale

B PERENNIALS



lavender



rosemary



sage



strawberry

Prohibited Plants

- Invasive Plants such as Iceplant, Ivy, Yellow Flag Iris, Mexican Feathergrass, Green Fountain Grass, Periwinkle
- Plants with thorns, spines or burs (may harm pedestrians)
- Any poisonous plants
- Conventional and Artificial Turf



Carpobrotus edulis
iceplant



Hedera helix
ivy



Iris pseudacorus
yellow flag iris



Nasella tenuissima
Mexican feather grass

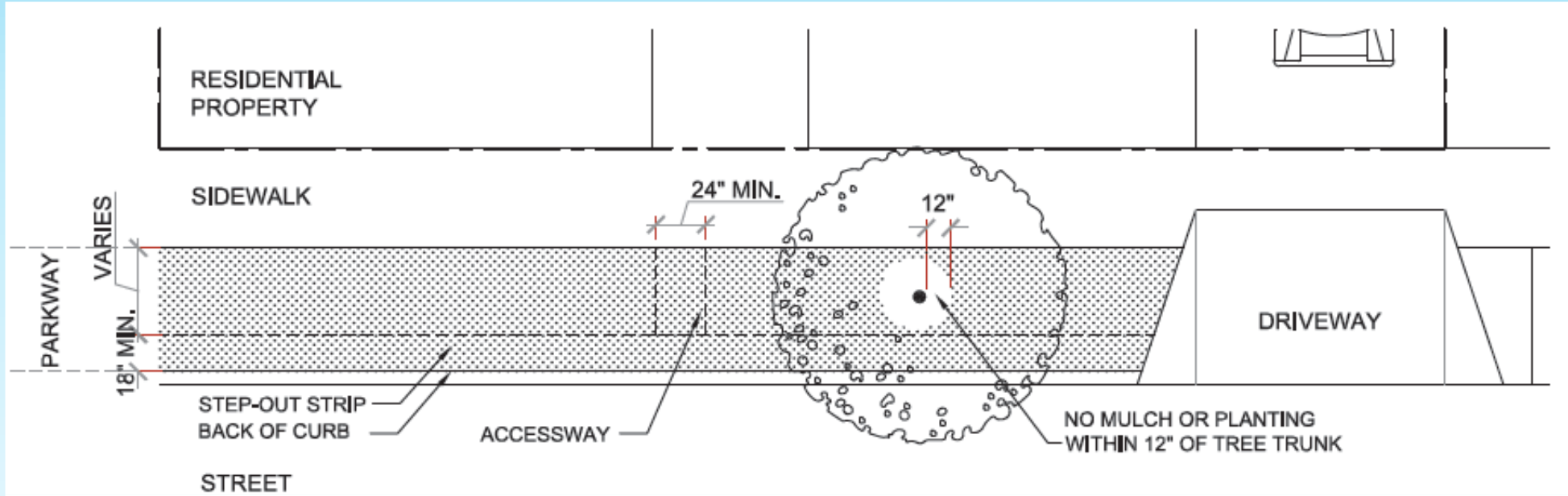


Pennisetum setaceum
green fountain grass



Vinca major
periwinkle

Five Parkway Designs: LAWN



A NO MOWING REQUIRED



Dymondia margaretae
silver carpet

B MOWING REQUIRED FOR WALKABILITY



Achillea millefolium
yarrow, mown



unmown
(up to 2' tall)

C MOWING OPTIONAL



Agrostis pallens
bentgrass

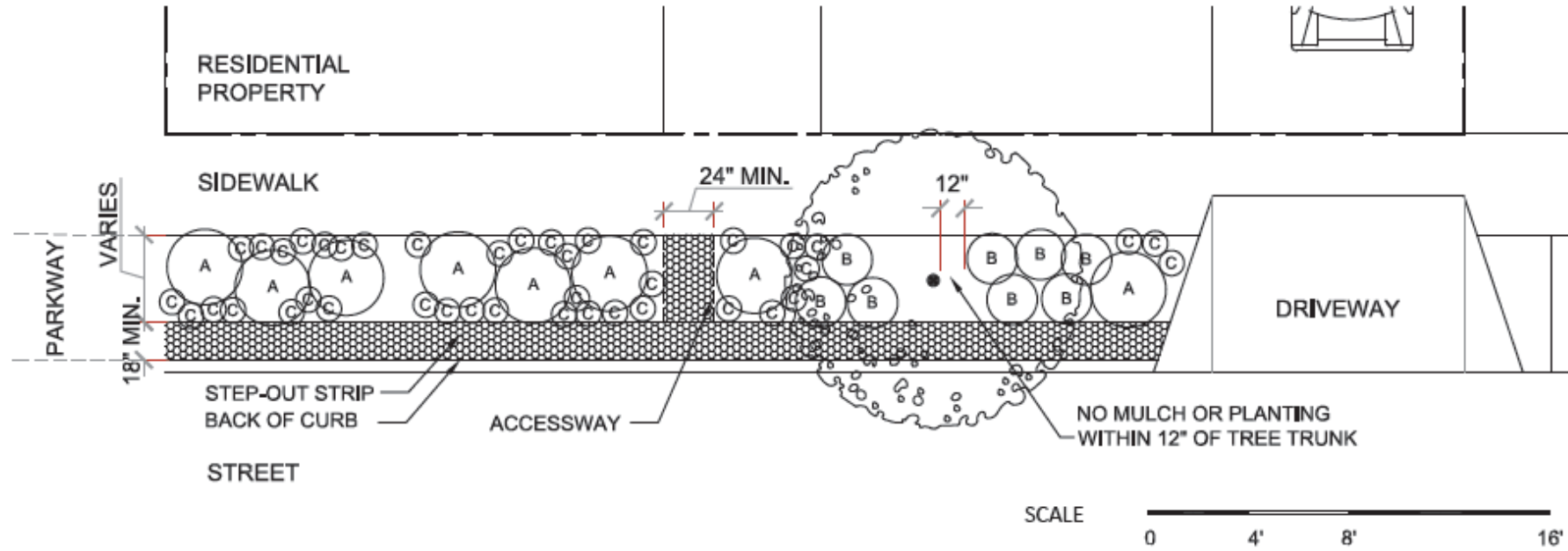


Bouteloua gracilis
blue grama



Buchloe dactyloides 'UC Verde'
UC Verde buffalo grass

Five Parkway Designs: NATIVE



A SHRUBS FOR SUN



Baccharis pilularis
'Pigeon Point'
dwarf coyote bush



Epilobium canum
California fuschia

A or B SHRUBS FOR SUN - PART SHADE



Eriogonum fasciculatum
California buckwheat



Corethrogyne (Lessingia)
filaginifolia 'Silver Carpet'
Silver Carpet aster



Mimulus aurantiacus
sticky monkeyflower

C PERENNIALS



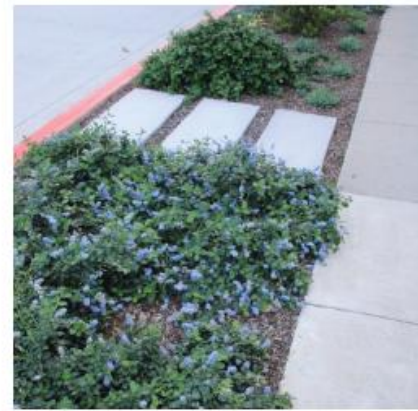
Asclepias eriocarpa
woolly pod milkweed



Asclepias fascicularis
narrow-leaved milkweed



Sisyrinchium bellum
blue-eyed grass



For more information

www.culvercity.org to download the guidelines and the permit application from the Public Works webpage

Engineering 310-253-5600

