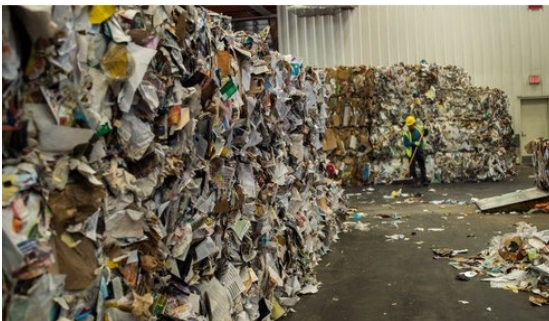


STATE OF RECYCLING

International Policies & Commodity Pricing



Athens' Commitment to the Environment

 We are committed to providing services that help preserve our environment

- Proper waste separation
- Usage of fuel-efficient vehicles
- Investing in technology that allows for better efficiency in capturing material
- Selling and shipping material to environmentally responsible buyers
- Ensuring compliance with international laws as they pertain to scrap shipments
- Landfill avoidance

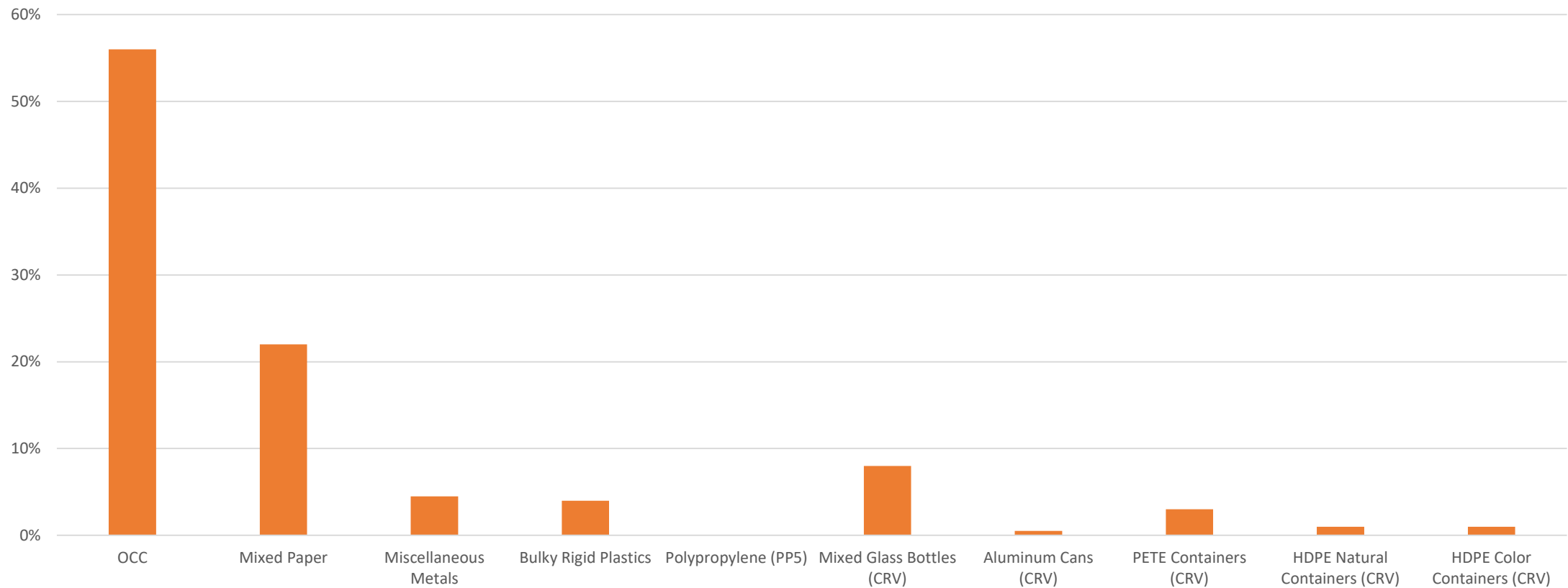
How are Culver City recyclables processed?

- Culver City materials are processed at Puente Hills MRF
- Recycling processing includes;
 - Pre-sorting and bag breaker
 - Debris Roll Screen
 - Heavy Material Separating
 - Fiber Separation
 - Magnetic & Optical Sorting
- Materials are then baled and shipped



Culver City Recycling Characterization

2022 Culver City Recycling Composition



Chinas Impact on the World's Scrap

- In 2013 China's consumption: 13.6 million tons of plastic and 56.6 million tons of fiber
- 55% of the world's scrap was consumed by China
- 44% of the US scrap was consumed by China
- In order to crack down on illegal solid waste imports and improve environmental health, China moved forward with several initiatives

Timeline of China's policies and reactions

- ↗ February 2013: Green Fence launched
- ↗ February 2017: National Sword announced
- ↗ July 18, 2017: China files intent to ban certain recyclables with WTO
- ↗ Late July 2017: China proposes 0.3 percent maximum contamination levels
- ↗ Mid-August 2017: Reports of slowdown in exports to China
- ↗ Late September 2017: Initial impacts of import restrictions reach curbside programs and MRFs
- ↗ November 2017: China increases contamination limit to 0.5 percent
- ↗ December 2017 to January 2018: China issues limited import permits for 2018

Timeline of China's policies and reactions

- January 2018: Significant shifts in material flow away from China
- March 2018: 0.5 percent contamination limit takes effect
- Mid-March 2018: Blue Sky 2018 announced
- Mid-April 2018: China announces additional materials prohibited by end of the year
- June-July 2018: Southeast Asian countries raise quality standards or ban imports
- July 2018: China declares intent for full recyclable import ban by 2020
- July-September 2018: Plastic scrap imports decline in SE Asia

Timeline of China's policies and reactions

- July-September 2018: Plastic scrap imports decline in SE Asia
- October 2018: Chinese investment in US recycling infrastructure continues to grow
- November 2018: Southeast Asian countries continue to limit scrap plastic imports
- January 2019: Plastic scrap imports to China down 99 percent in 2018, recovered fiber down 34 percent
- March 2019: India scrap plastic import ban announced, postponed until August 2019
- March 2019: Indonesia sets recovered paper import restrictions and quality requirements, then postpones changes until further notice
- March 2019: Vietnam announces plan to ban all plastic scrap imports by 2025
- April 2019: Exports of scrap paper and plastic declining since November 2018

Timeline of China's policies and reactions

- ✚ April 2019: Malaysia dealing with a spike of plastic scrap shipments fraudulently labeled as finished plastic products
- ✚ May 2019: China announces retaliatory tariffs on US goods that includes 20% duty on recycled paper pulp
- ✚ May 2019: Malaysia sending some non-recyclable plastic scrap back to countries of origin
- ✚ December 2019: China stops planned additional tariff increase on OCC, other fiber, and scrap aluminum imported from the US
- ✚ January 2020: China acknowledges scrap is different from solid waste in their updated standards for nonferrous metal imports
- ✚ January 2020: India will enforce 1% contamination limit on mixed paper imports

Where is material going now?

- Stays domestic: California and anywhere in the US
- Mexico
- South America
- India
- Southeast Asia
 - Indonesia
 - Vietnam
 - Thailand
 - Malaysia
 - South Korea



What affects Pricing?

- Supply and demand
- Scrap import policies
- Quality of the material
- Time of the year (Overseas holidays)
- International trade policies
- Finished product pricing
- Transportation costs (fuel, freight)

COMMODITY	2016	2017	2018	2019	2020	2021	2022
GLASS	\$181	\$175		\$46	\$20	\$27	\$46
ALUM CANS	\$3,908	\$4,186	\$4,245	\$3,811	\$3,868	\$4,306	\$4,406
ALUM SCRAP	\$473	\$552	\$789	\$527	\$368	\$648	\$746
ALUM FOIL	\$226	\$592	\$515	\$290	\$257	\$658	\$711
METAL	\$92	\$145	\$231	\$148	\$119	\$198	\$177
TIN CANS	\$64	\$134	\$178	\$107	\$91	\$180	\$153
ASEPTIC CARTONS	\$74	\$50	\$45	\$12	\$9	\$15	\$13
SRPN						\$154	\$157
MAGAZINE	\$140	\$154	\$129	\$68	\$63	\$103	\$0
MIX PAPER	\$95	\$92	\$55	\$24		\$95	\$74
OLD NEWSPAPER			\$115	\$73	\$72	\$0	\$0
OFFICE PACK			\$180	\$119	\$116	\$180	\$214
OCC	\$137	\$180	\$106	\$62	\$93	\$168	\$132
WHITE LEDGER	\$185	\$185	\$255	\$242	\$179	\$0	\$0
SCRAP CARTS					\$134		\$175
BULKY	\$160	\$87	\$56	\$68	\$84	\$141	\$152
HDPE COLOR	\$436	\$356	\$383	\$357	\$296	\$720	\$360
HDPE NATURAL	\$620	\$550	\$738	\$710	\$1,030	\$1,805	\$1,052
PET	\$2,058	\$1,890	\$1,748	\$1,833	\$1,555	\$1,693	\$1,653
PET- SCRAP		\$155	\$200	\$122	\$195	\$231	\$241
PP#5			\$170	\$185	\$92	\$303	\$181

How can we improve our recycling?

Best practices

- Loose
- Dry
- Unbagged
- Make sure cart lids are closed
- Keep lids on PLASTIC beverage containers
- Remove lids on GLASS beverage containers

Refer to the City's educational outreach materials



Thank you