

# How to Comply with California's New Food Donation Law



**Culver** CITY  
ENVIRONMENTAL PROGRAMS  
AND OPERATIONS DIVISION



California State Law Senate Bill (SB) 1383 went into effect January 1, 2022, mandating that residents and businesses across the state do their part to reduce organic material in landfills by 75% and recover 20% of currently-disposed edible food for human consumption.

Businesses are now required to arrange for organics recycling services, and businesses such as supermarkets and wholesale food vendors must implement programs to recover the maximum amount of surplus edible food that would otherwise be disposed of to feed those in need.

## WHY IT'S IMPORTANT

Although more than 9 million Californians (23% of the state's population) are food insecure, our state sends six million tons of food scraps/waste to landfills every year, one million tons of which was potentially donatable, still edible food.

The landfilling of so much organic waste is also a significant source of local air quality pollutants and California landfills are responsible for as much as 41% of the state's methane emissions, negatively impacting the health of both our people and planet.

For more information on Senate Bill 1383 & California's Short-Lived Climate Pollutant Reduction Strategy, please visit the state's website:

[calrecycle.ca.gov/organics/slcp](https://calrecycle.ca.gov/organics/slcp)



COMPLIANCE  
REMINDER



**Businesses with fully compliant food donation programs are not exempt from SB 1383's separate organic waste collection mandates unless they are eligible for a waiver.**

For more information, visit [www.culvercityrecycles.com](http://www.culvercityrecycles.com) or contact Culver City Public Works Customer Service at (310)253-6400

# WHEN IS MY BUSINESS REQUIRED TO START DONATING SURPLUS FOOD?

Commercial businesses and public institutions that create food waste are known as Commercial Edible Food Generators, or "EFGs." All EFGs fall into one of two Tiers, with those in Tier 1 required to donate their surplus food starting January 1, 2022, and those in Tier 2 required to start by January 1, 2024.

The Culver City Public Works Department and its contractor, Go2Zero Strategies, will be conducting in-person inspections of all Tier 1 and Tier 2 businesses throughout 2024.

## Commercial Edible Food Generators

### Tier 1

**January 1, 2022**

Tier 1 businesses typically have more produce, fresh grocery, and shelf-stable foods to donate.



### Tier 2

**January 1, 2024**

Tier 2 businesses typically have more prepared foods to donate, which often require more careful handling to meet food safety requirements (e.g. time and temperature controls).



## WHERE CAN I DONATE FOOD?

Los Angeles County is home to many food recovery organizations and food recovery services that accept food donations directly from EFGs. Some food recovery organizations can pick up donations, while others require drop off. Please find a list of local organizations on Page 4.

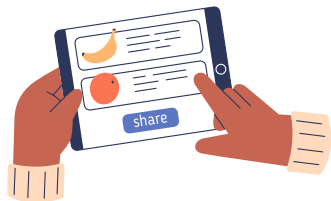
## WHAT FOOD CAN BE DONATED?

EFGs should donate all food that is fit for human consumption, regardless of its appearance or age. This includes unspoiled packaged foods, even those that are past their "best by" or "freshest by" dates. What's more, laws like California's Good Samaritan Food Donation Act and the Federal Good Samaritan Food Donation Act protect businesses from liability when donating food they believe to be edible.

# How to Get in Compliance

## STEP 1:

Contact a local food recovery organization or service and agree to a donation plan.



You may use the free Careit app to find authorized recipients and maintain mandatory donation records.



## STEP 2:

Donate ALL surplus edible food that is fit for human consumption.

Make sure to discard any inedible food waste in the organics bin or compost, never in the trash; staff may not intentionally allow recoverable food to spoil.

## STEP 3:

Maintain up-to-date records of your donations on-site to demonstrate compliance with SB 1383.

Records may be kept at your location or uploaded to the Careit app.



## Food Waste Reduction Tips

Conduct a food waste audit or monitor waste streams to identify “problem foods” that often spoil sooner than they are able to be used, sold, or donated; adjust purchasing & inventory practices.



Find creative ways to repurpose leftovers and surplus ingredients, such as:

- vegetable & meat trimmings into soup stock
- overripe fruits into drinks or baked goods
- “ugly” produce into salsas, chutneys or dressings



Extend the shelf life of foods for later use or donation, such as:

- Freezing surplus fresh fruits and veggies
- Marinating surplus raw meats
- Cooking raw meat & seafood that’s close to expiring into deli or grab-and-go products



Additional food waste reduction tips for different business & organization types can be found here:

[epa.gov/sustainable-management-food/tools-preventing-and-diverting-wasted-food#options](https://www.epa.gov/sustainable-management-food/tools-preventing-and-diverting-wasted-food#options)

## RECORDKEEPING REQUIREMENTS CHECKLIST

Tier 1 & Tier 2 businesses must keep the following records:

- A copy of contracts or written agreements with each partnering food recovery organization or service.
- The name, address, and contact information of the food recovery organization or service.
- The types of food that will be donated.
- The established frequency of food donation(s).
- The quantity, in pounds, of food donated.

# Food Recovery Organizations and Services

The following local organizations accept food donations from businesses located in Culver City.

Please contact them to find out what types and quantities of foods they are able to accept.

## S.A.V.E.S

[st-augustine-church.org/SAVES](http://st-augustine-church.org/SAVES)  
3850 Jasmine Avenue  
Culver City, CA 90232  
Phone: (310) 838-2702

## Salvation Army Santa Monica Corps

[santamonica.salvationarmy.org](http://santamonica.salvationarmy.org)  
1533 4th Street  
Santa Monica, CA 90401  
Phone: (310) 451-1358

## Step Up on Second Kitchen

[stepup.org/locations/los-angeles-county](http://stepup.org/locations/los-angeles-county)  
1328 Second Street  
Santa Monica, CA 90401  
Phone: (310) 394-6889

## FOODCYCLELA

[foodcyclela.org](http://foodcyclela.org)  
6636 Selma Avenue  
Los Angeles, CA 90028  
Phone: (323) 897-9696

## The Salvation Army Hollywood Corps

[hollywoodcorps.org](http://hollywoodcorps.org)  
5941 Hollywood Boulevard  
Los Angeles, CA 90028  
Phone: (323) 960-0640



## ADDITIONAL FOOD DONATION RESOURCES

- Culver City Public Works Environmental Programs & Operations Division:  
[www.culvercityrecycles.com](http://www.culvercityrecycles.com)
- Careit: [my.careitapp.com](http://my.careitapp.com)
- LA County Food Drop Recipient Map: [pw.lacounty.gov/epd/sbr/food-drop.aspx](http://pw.lacounty.gov/epd/sbr/food-drop.aspx)
- CalRecycle Surplus Food Donation Guide: [calrecycle.ca.gov/organics/slcp/foodrecovery/donors](http://calrecycle.ca.gov/organics/slcp/foodrecovery/donors)



For more information, visit [www.culvercityrecycles.com](http://www.culvercityrecycles.com) or contact Culver City Public Works Customer Service at (310)253-6400